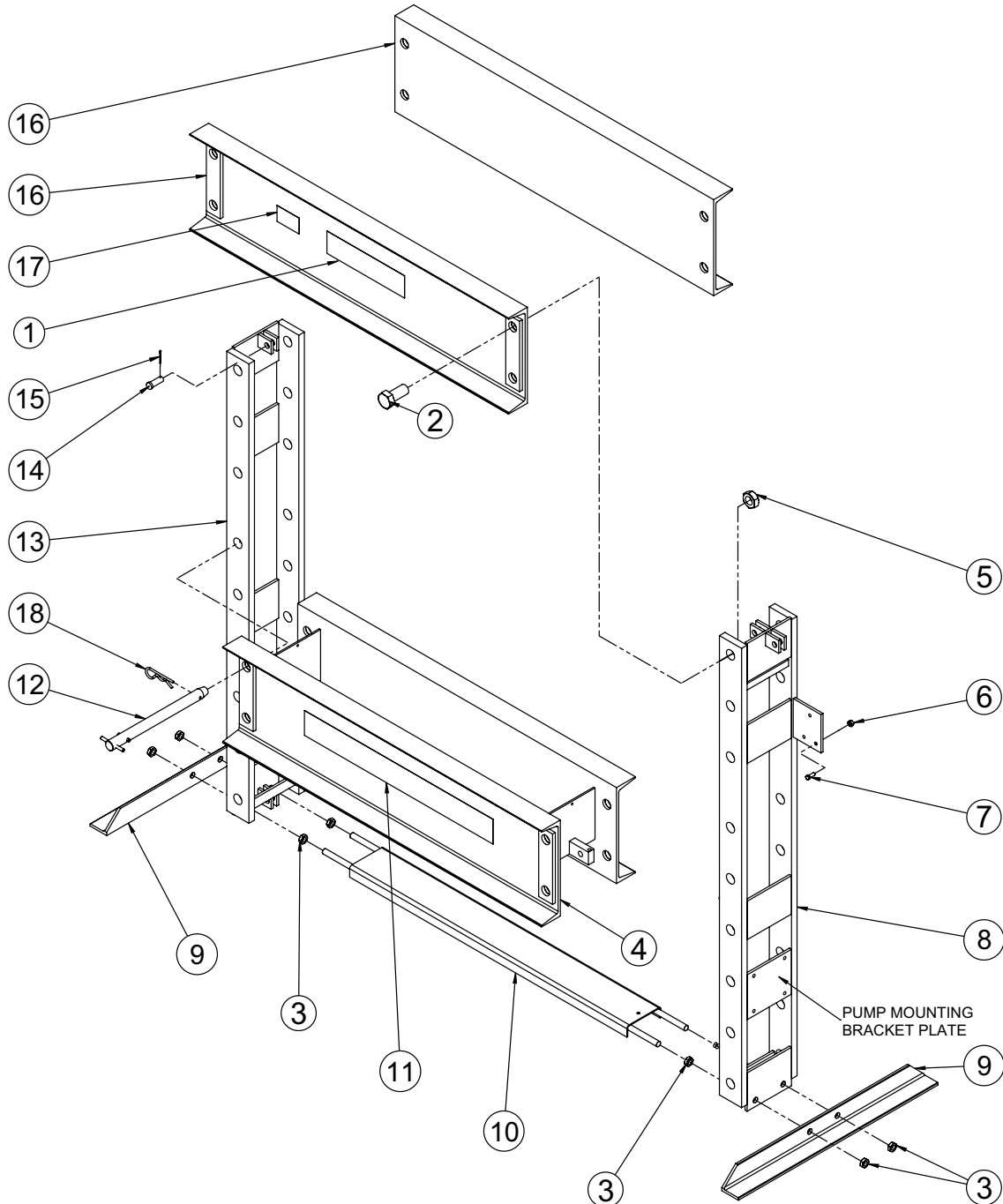


## 100 TON SHOP PRESS FRAME ASSEMBLY

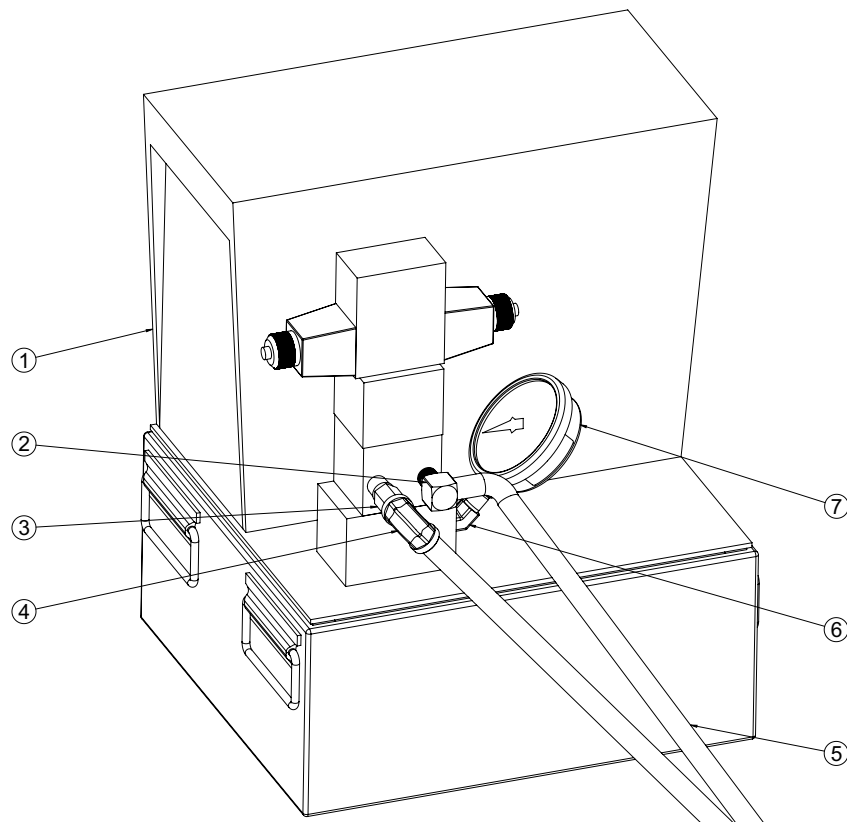


# PART LIST

ITEM	PART NO.	DESCRIPTION	QTY.
1	36586	TRADE NAME DECAL	1
2	204344	HEX CAP SCREW (1-3/8 -12 × 3)	8
3	10397	HEX NUT (3/4-10)	8
4	61144OR9	LOWER BOLSTER	1
5	10406	HEX JAM NUT (1-3/8 -12; Torque to 275/300 ft. lbs.)	8
6	10204	HEX NUT (3/8-16)	3
7	10049	HEX HD. CAP SCREW (3/8-16 × 1" Lg.)	3
8	51229	UPRIGHT, R.H.	1
9	25849	FOOT ANGLE	2
10	43176	UPRIGHT SPACER (100 Ton)	1
11	46909	WARNING DECAL	1
12	*38166	PIN, CROSS (Replaced with HDT38166-KIT)	4
13	51230	UPRIGHT, L.H.	1
14	16654	CLEVIS PIN (3/4 Dia. × 2" Lg.)	**AR
15	10472	COTTER PIN (1/8 Dia. × 1-1/2" Lg.)	**AR
16	43148OR9	UPPER BOLSTER	2
17	206043	INSTRUCTION DECAL	1
18	*2010229	PIN, HAIRPIN COTTER (0.25 × 5.0 )	4
<b>PARTS INCLUDED BUT NOT SHOWN</b>			
	310051	MADE IN USA DECAL.	1
<b>**AR = AS REQUIRED</b>			
<b>Part numbers marked with an asterisk (*) are contained in repair kit (No. HDT38166-KIT)</b>			

## Parts list continued

### PQ603 OR PQ1204S ELECTRIC PUMP HOOKUP



ITEM	PART NO.	DESCRIPTION	QTY.
1	PQ603	PUMPE, 60 CU IN/MIN, 230V, 60HZ (see Form #100353; for SPE10010)	1
	PQ1204S	PUMPE 120 CU IN/MIN, 460V, 60HZ, D (see Form #100353; for SPE10013DS)	1
2	10474	ELBOW FITTING (90° × 3/8 NPTF; used on all pumps)	1
3	9683	STRAIGHT FITTING (3/8 NPTF; for SPE10013DS)	1
4	10647	ELBOW FITTING (90° × 3/8 NPTF; for SPE10013DS)	1
5	350158	HOSE, RUBBER .38" INTERNAL DIA, 10' (for SPE10010)	1
	350158	HOSE, RUBBER .38" INTERNAL DIA, 10' (for SPE10013DS)	2
6	10645	FITTING, 45° ELB 1/4 NPTF M X 1/4 NPTF F (for SPE10010 and SPE10013DS)	1
7	9075	GAUGE 4" 0-100TON C/R/RA/RD/+ DRY 2000 PSI	1
<b>PARTS INCLUDED BUT NOT SHOWN</b>			
	50931	PUMP MOUNTING BRACKET	1

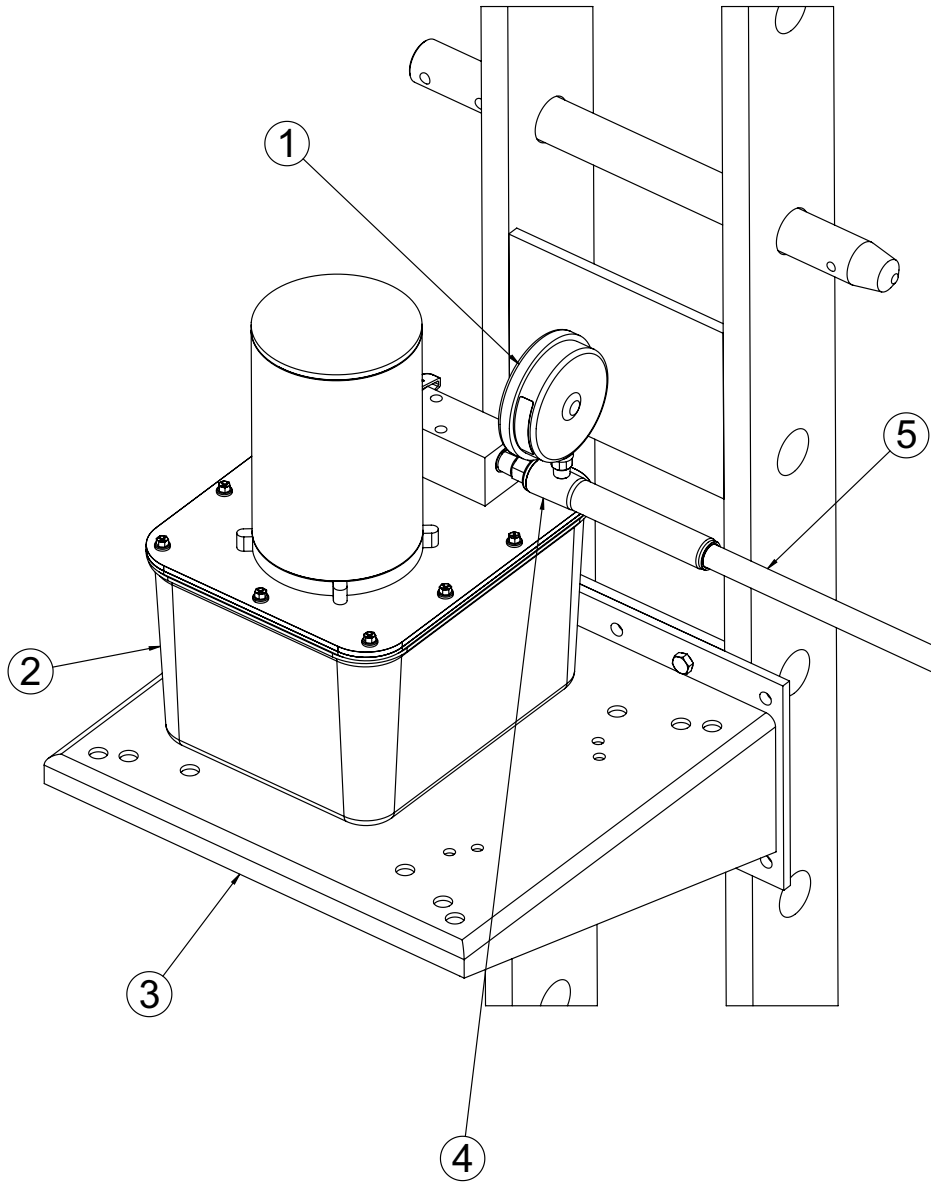
Refer to any operating instructions included with the product for detailed information about operation, testing, disassembly, reassembly, and preventive maintenance.

Items found in this parts list have been carefully tested and selected. **Therefore: Use only genuine Power Team replacement parts!**

Additional questions can be directed to one of our Technical Services Departments.

Parts list continued

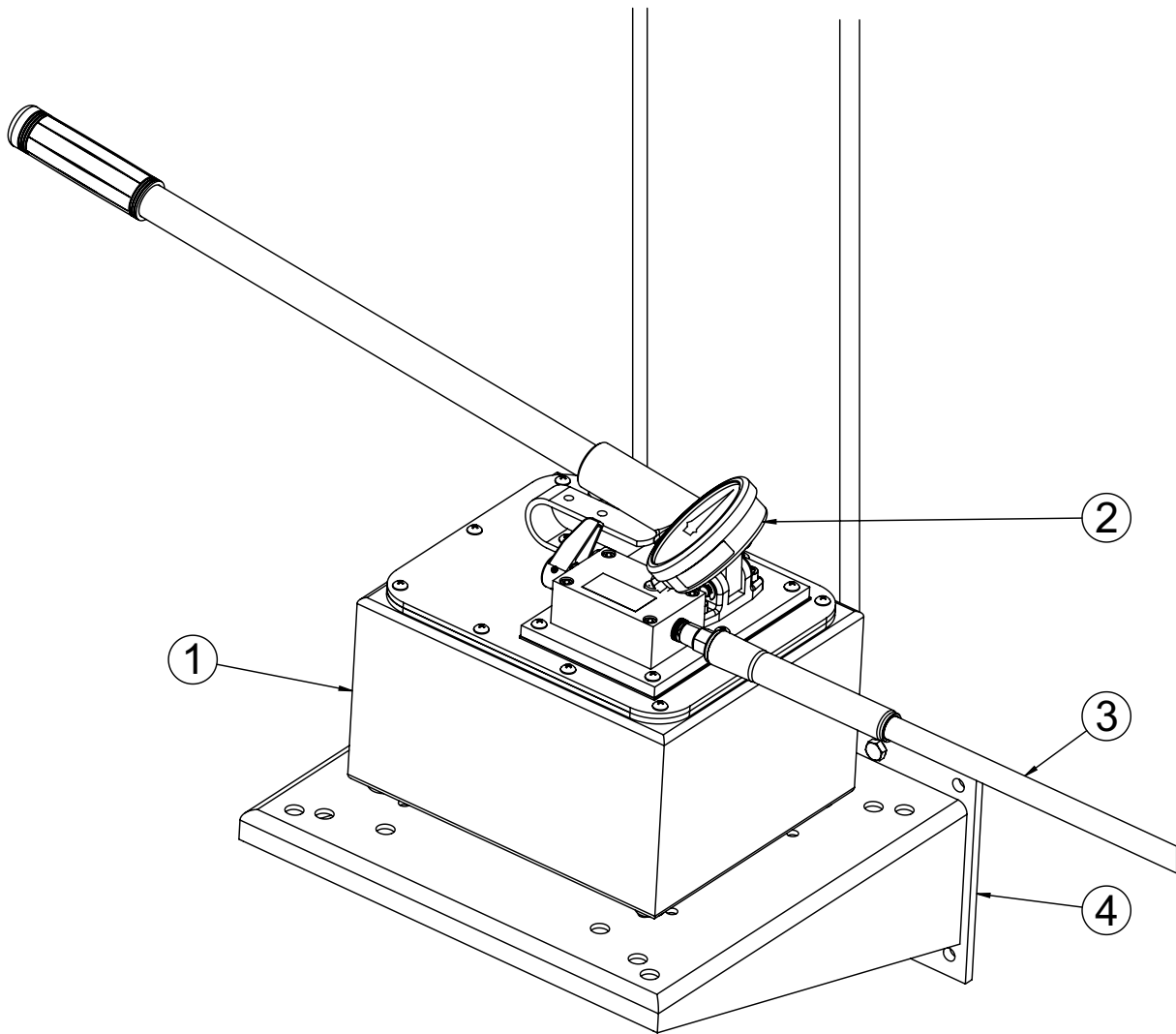
**PE172 ELECTRIC PUMP**



ITEM	PART NO.	DESCRIPTION	QTY.
1	9075	GAUGE 4" 0-100TON C/R/RA/RD/+ DRY 2000 PSI	1
2	PE172	PUMP,E17 CU IN/MIN, 110/115V, 50/60 HZ (see Form #100577; for SPE10010R)	1
3	50931	PUMP MOUNTING BRACKET	1
4	9670	TEE ADAPTER (1/4", 3/8" NPTF F, 3/8" NPTF M)	1
5	350158	HOSE, RUBBER .38" INTERNAL DIA, 10'	1

**Note: Pump mounting hardware is included with the pump.**

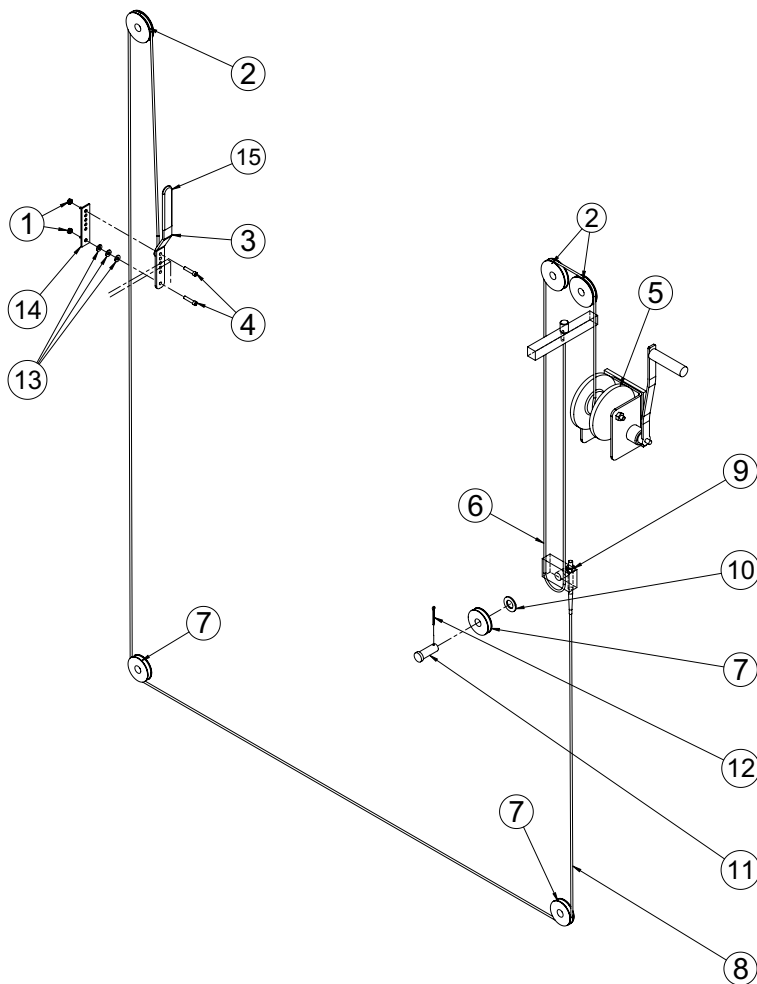
**P460 HAND PUMP**



ITEM	PART NO.	DESCRIPTION	QTY.
1	P460	HAND PUMP, 2-SPD, .294-7.35 CU IN/STROKE (see Form #100390; for SPM10010)	1
2	9075	GAUGE 4" 0-100TON C/R/RA/RD/+ DRY 2000 PSI	1
3	350158	HOSE, RUBBER .38" INTERNAL DIA, 10'	1
4	50931	PUMP MOUNTING BRACKET	1

Parts list continued

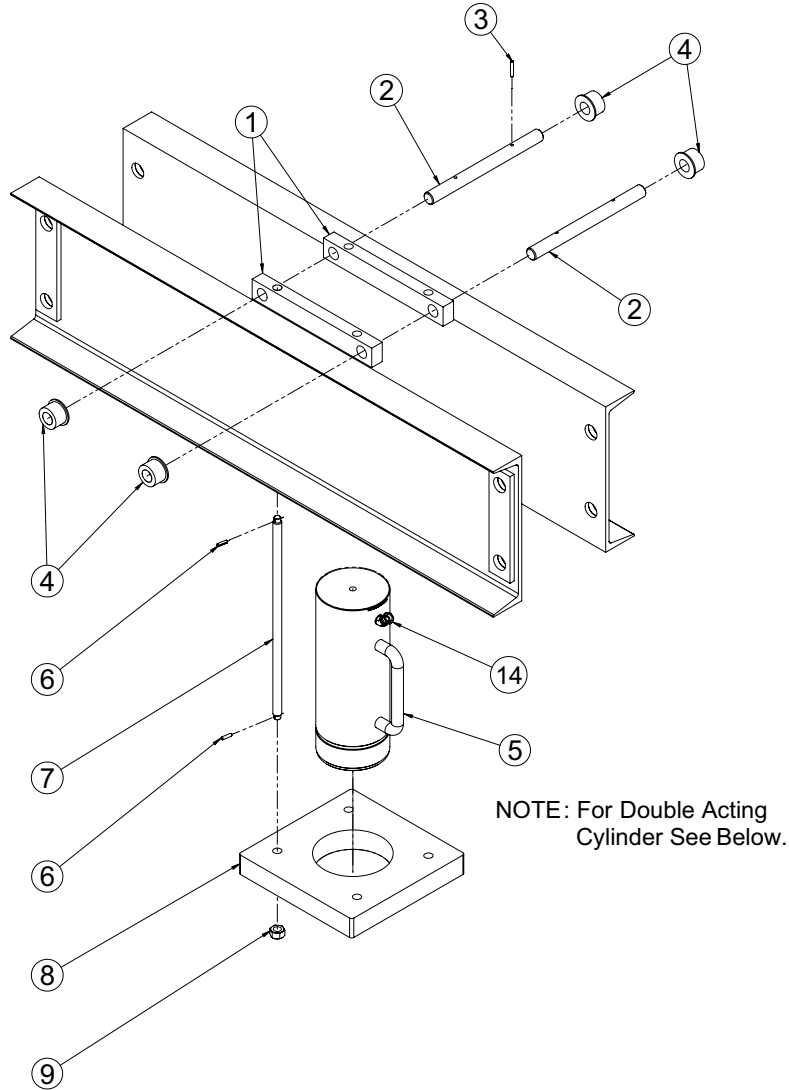
**CABLE ASSEMBLY**



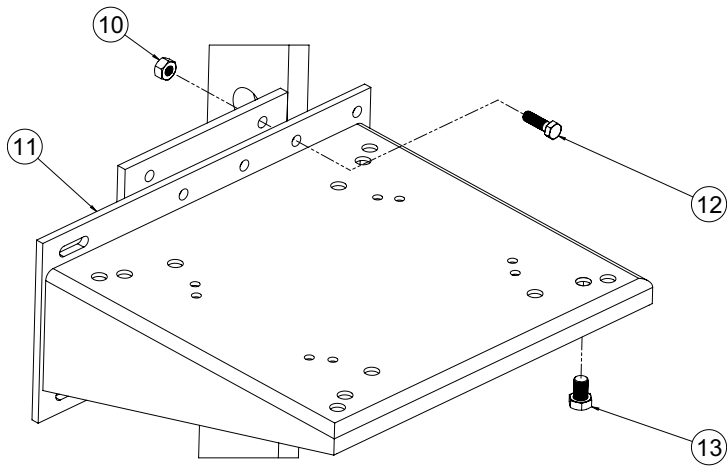
ITEM	PART NO.	DESCRIPTION	QTY.
1	12809	HEX LOCK NUT (1/4-20)	2
2	16659	PULLEY (3" O.D.)	3
3	38579	STRAP HANDLE (For press)	1
4	10020	CAP SCREW (1/4-20 × 1-1/4 Lg.)	2
5	18895 -1	WINCH, W/SAFETY BRAKE	1
6	207043	WINCH CABLE	1
7	16653	PULLEY (2-1/2" O.D.)	3
8	38200	PRESS CABLE	1
9	10204	HEX NUT (3/8-16)	1
10	12330	PLAIN WASHER (for 3/4 bolt)	1
11	16654	CLEVIS PIN (3/4 Dia. × 2" Lg.)	**AR
12	10472	COTTER PIN (1/8 Dia. × 1-1/2" Lg.)	**AR
13	12719	PLAIN WASHER (for 1/4 bolt)	3
14	201929	CABLE ADJUST STRAP	1
15	17241	HANDLE GRIP	1

**\*\* AR = AS REQUIRED**

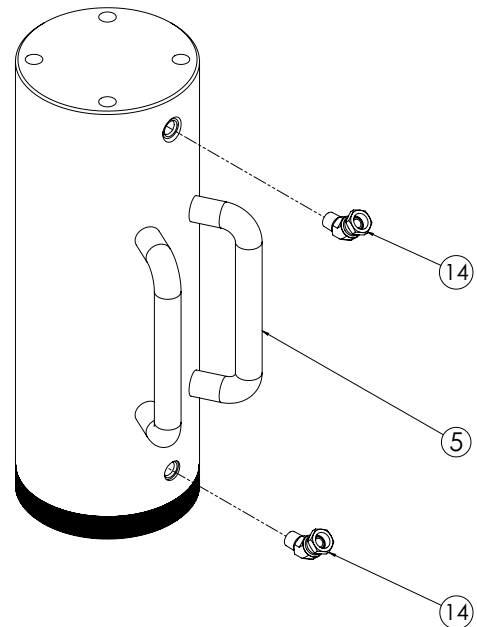
### CYLINDER MOUNTING ASSEMBLY



### PUMP MOUNTING BRACKET



### DOUBLE-ACTING CYLINDER



**Parts list continued**

**CYLINDER MOUNTING ASSEMBLY**

ITEM	PART NO.	DESCRIPTION	QTY.
1	44419	BAR	2
2	302551	BAR (for 100 Ton)	2
3	10982	ROLL PIN (1/4 Dia. × 1-1/2" Lg.)	4
4	206944	ROLLER	4
5	52434	SINGLE-ACTING CYLINDER 100 TON 10-1/4" STROKE, OR9 (see Form # 100385; for SPE10010, SPM10010, & SPE10010R; Includes Item 14)	1
	51683	DOUBLE-ACTING CYLINDER 100 TON 13-1/8" STROKE (see Form # 100302; for SPE10013DS; Includes Item 14)	1
6	10585	ROLL PIN (1/4 Dia. × 1" Lg.)	8
7	302549	THREADED ROD	4
8	52451	RAM MOUNTING PLATE (for SPE10010, SPM10010, & SPE10010R)	1
	51786	RAM MOUNTING PLATE (for SPE10013DS)	1
9	10216	HEX NUT (3/4-10 UNC)	4
10	10204	HEX NUT (3/8-16)	2
11	50931	PUMP MOUNTING BRACKET	1
12	10052	HEX HD. CAP SCREW (3/8-16 × 1-1/4" Lg.)	2
13	10798	HEX HD. CAP SCREW (1/2-20 × 3/4" Lg.)	4
14	10648	FITTING, 45° ELB 3/8 NPTF M X 3/8 NPSM F (Included with 52434 Single-Acting Cylinder)	1
15	10648	FITTING, 45° ELB 3/8 NPTF M X 3/8 NPSM F (Included with 51683 Double-Acting Cylinder)	2